

## Urban MULTI<sup>Evo</sup>

Multi-user counter



The Urban MULTI<sup>Evo</sup> counts and classifies pedestrians, cyclists and scooters (option) on shared facilities or on sidewalks with an adjacent bike path.

Designed for the urban environment, it has a sleek, durable shell and uses sensors from the PYRO<sup>Evo</sup> and ZELT<sup>Evo</sup>. The Urban MULTI<sup>Evo</sup> is a permanent counter.

- + Designed for the urban landscape
- + Battery powered
- + Robust, waterproof & discreet
- + Remote maintenance & updates
- + Wireless data transmission

### User groups counted

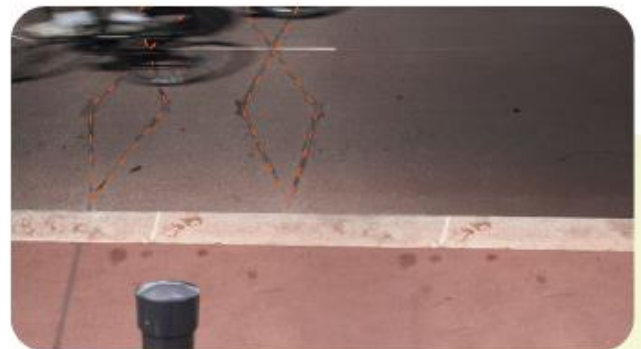
The Urban MULTI<sup>Evo</sup> can count and classify pedestrians, cyclists and scooters to obtain reliable traffic data. It also measures direction and speed\*.

Robust, battery-powered, vandal-proof, and sustainably designed, the Urban MULTI<sup>Evo</sup> is the ideal outdoor counter. Through firmware updates, it will be able to count new user types in the future (cargo bikes, for example).

\*Scooter classification, direction and speed detection are optional



*The Urban MULTI<sup>Evo</sup> integrates a PYRO<sup>Evo</sup> in an urban post and ZELT<sup>Evo</sup> loops under asphalt to count pedestrians, cyclists and scooters. In an urban environment, it blends quietly into its surroundings.*



*The Urban MULTI<sup>Evo</sup> is an easy-to-use system which requires little maintenance (2-year battery life) and does not require on-site visits for data collection (if remote data transmission is activated).*

## Physical characteristics

### + Urban post

<b>Waterproofing</b>	IP 66
<b>Dimensions</b>	+ H: 110 cm (43"), outer Ø: 12.5 cm (5"), internal Ø: 11.5 cm (4.5") + Base: Ø 25 cm (9.8") / Hood: Ø 14.5 cm (5.7")
<b>Material</b>	Aluminium & PVC
<b>Color</b>	Gray - RAL 7016 (custom colours available - please contact us)
<b>Anchor base dimensions</b>	Ø 25 cm (9.8"), H: 33.5 cm (13")
<b>Anchorage material</b>	Steel

### + PYRO<sup>Evo</sup> Sensor

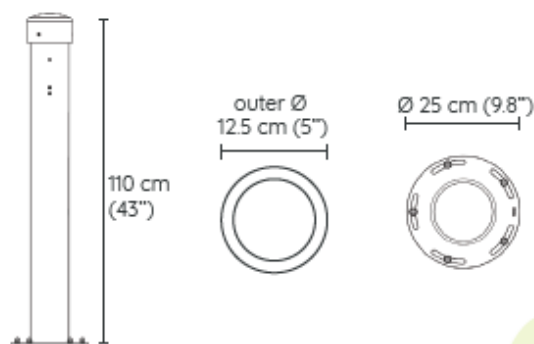
<b>Outer dimensions</b>	100 mm (3.9") x 127 mm (5") x 38 mm (1.5")
<b>Lens dimensions</b>	Ø 10 mm (0.4") / Thickness: 0.7 mm (0.03")
<b>Lens material</b>	+ PYRO sensor short & medium range: polyethylene HD + PYRO-Zoom sensor : germanium
<b>Minimal sensitivity</b>	1 °C variation from the surrounding environment
<b>Range</b>	1 m, 4 m or 12 m (3', 15' or 33')

### + ZELT<sup>Evo</sup> Sensor

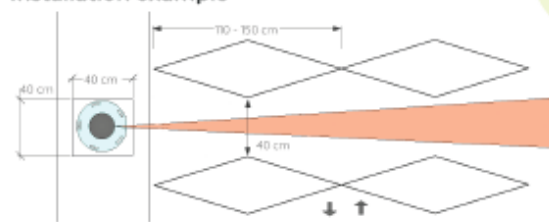
<b>Connectors</b>	+ 2 x 4 loop connectors + 1 battery pack connector + 1 dry contact connector
<b>Installation</b>	+ Trench depth: 40 to 50 mm (1.6 to 2") + Trench width: 20 mm (0.8")
<b>Waterproofing</b>	IP 68
<b>Detection loop sizes</b>	+ Loop length: 80 - 150 cm (31.5 - 59") + Loop width: 40 cm (15.7")

## General features

<b>Technology</b>	+ PYRO <sup>Evo</sup> sensor: passive infrared + ZELT <sup>Evo</sup> sensor: electromagnetic loop
<b>Autonomy</b>	+ Up to 4 ZELT loops: 15 years + More than 4 ZELT loops: 1 year
<b>Calibration</b>	Autocalibration
<b>Settings</b>	Adjustable sensitivity using our Eco-Link software
<b>Direction</b>	Direction detection optional
<b>Covered width</b>	Up to 6 meters (21')
<b>Data logging</b>	60 minutes or 15 minutes recording intervals as options
<b>Memory</b>	> 12 months
<b>Available configurations</b>	+ Standard: Urban MULTI <sup>Evo</sup> along the path + Optional: Urban MULTI <sup>Evo</sup> centered in the pathway, detection on both sides of the post
<b>Operating temperature</b>	-40 °C to +50 °C (-40 °F to 122 °F)



### Installation example



TOP VIEW

Go further in your counting strategy:

**PYRO-Box<sup>Evo</sup>:**  
Mobile counter  
All environments  
Pedestrians



**ZELT<sup>Evo</sup>:**  
Permanent counter  
All environments  
Cyclists /  
Scooters

